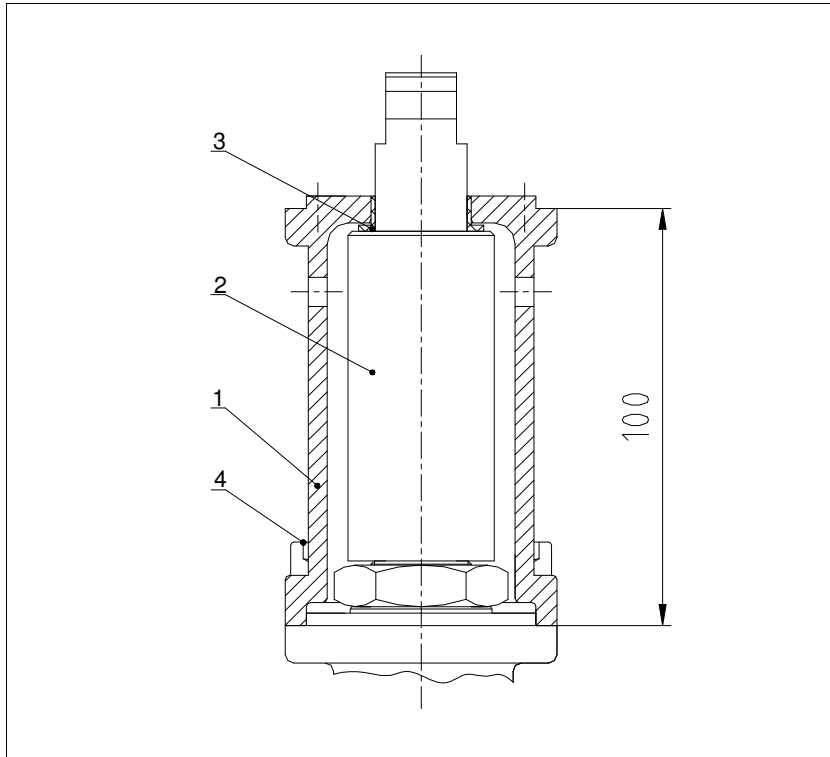


# BALL VALVES INTEC

## Stem extension

### INTEC 11, F05/F05 - F14/F14



Stem extension with top flange  
acc. to DIN EN ISO 5211

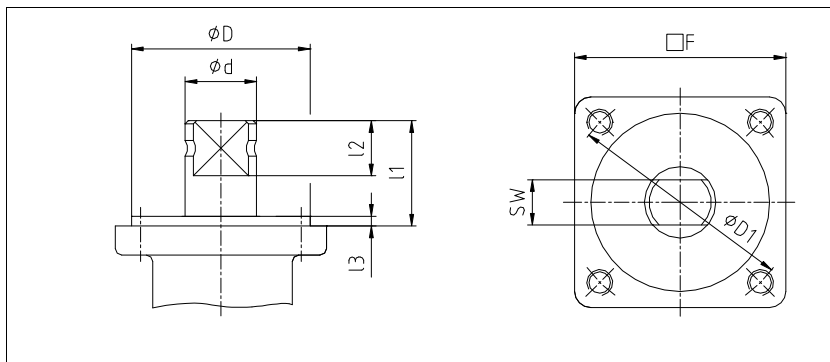
**Specification:**

Stem extension with top flange acc. to DIN EN ISO 5211, stem extension length 100 mm (special length on request), double-d of coupling is equal to double-d of valve stem, coupling is precisely pivoted in the extension-body, body with leakage holes.

Marking: INTEC 11

**Ordering example:**  
INTEC 11, F05/F05, SW14

No.	Part	Material
1	body	1.4408
2	coupling	1.4462
3	bearing	PTFE
4	socket screw	A2-70



**Dimensions**

top flange ISO	dimensions (mm)									weight kg
	F	D	D1	d	SW	l1	l2	l3		
F05/F05	49.0	35.0	50.0	14.0	11.0	22.5	11.0	2.0	0.9	
F05/F05	49.0	35.0	50.0	18.0	14.0	26.0	14.0	2.0	1.0	
F07/F07	65.0	55.0	70.0	22.0	17.0	32.5	17.0	3.0	1.5	
F10/F10	90.0	70.0	102.0	26.0	19.0	37.5	19.0	3.0	1.8	
F12/F12	110.0	85.0	125.0	33.0	24.0	42.5	24.0	3.0	3.8	
F12/F12	110.0	85.0	125.0	42.0	30.0	48.5	30.0	3.0	4.5	
F14/F14	130.0	100.0	140.0	42.0	30.0	48.5	30.0	3.0	7.0	
F14/F14	130.0	100.0	140.0	55.0	41.0	59.5	41.0	3.0	7.9	

09/2016

Subject to modification.